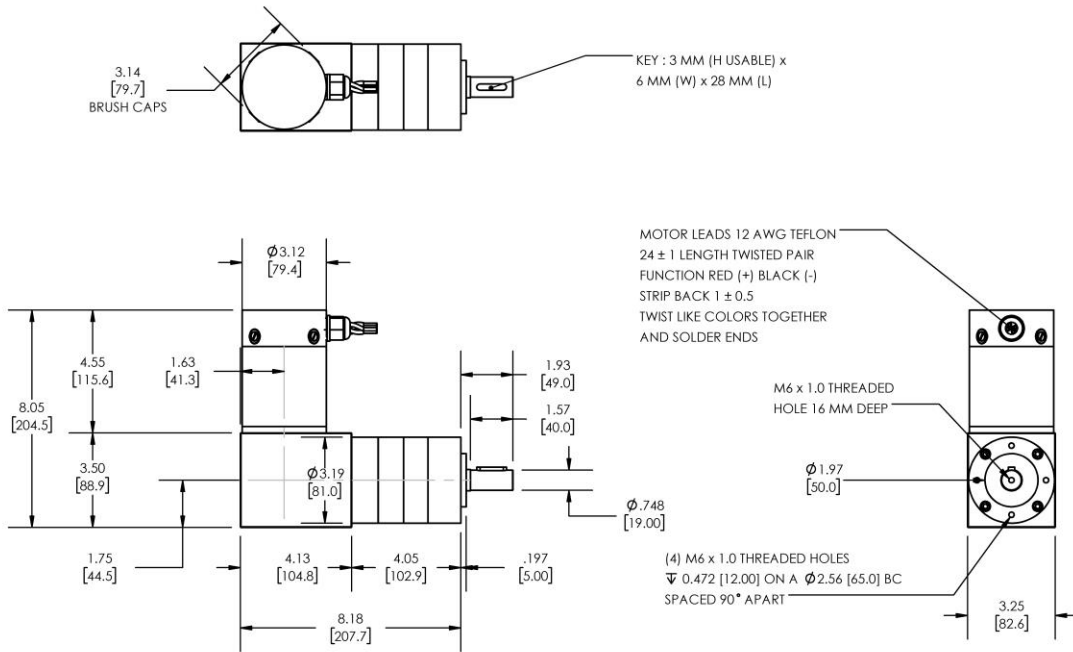


Model Number:

MMP D33-455D-24V GRA81-051



DIMENSIONS ARE INCHES [MM] UNLESS OTHERWISE STATED

PLANETARY GEARMOTOR OUTPUT PARAMETERS:	VALUE	UNITS	TOLERANCE
Gearhead Ratio (exact)	50.89 : 1		
Gearhead Shaft Output Speed (at full-load)	75	RPM	MAX
Gearmotor Rated Continuous Torque	196	In-Lbs	MAX
Gearmotor Rated Peak Torque	899++	In-Lbs	----
Gearhead Standard Backlash	36	Arc Minutes	MAX
Gearhead Efficiency	70%	----	----
Output Shaft Radial Load Capacity	225	Lbs	MAX
Output Shaft Axial Load Capacity	45	Lbs	MAX
Gearmotor Total Weight	16	Lbs	MAX

++ All Peak Torque values are dependent upon duty. Contact our sales office for details.

DC MOTOR PERFORMANCE PARAMETERS:	VALUE	UNITS	TOLERANCE
Rated DC Voltage	24	DC VOLTS	----
Rated Continuous Current	13.5	AMPERES	----
No-Load Speed	4528	RPM	MAX
Rated Speed	3804	RPM	+/- 15%
Rated Continuous Power Out	248	WATTS	+/- 15%
Rated Continuous Torque	88	OZ-IN	----
Peak Torque (motor only)	404	OZ-IN	----
No-Load Current	1.24	AMPERES	MAX
Back EMF Constant (Ke)	5.3	V/KRPM	+/- 10%
Torque Constant (Kt)	7.2	OZ-IN/AMP	+/- 10%
DC Armature Resistance	0.28	OHMS	+/- 15%
Armature Inductance	0.21	mH	+/- 15%
Armature temperature	155	DEG. C	MAX

NOTES:

- ENCODER & BRAKE OPTIONS AVAILABLE – [FOLLOW THIS LINK FOR DETAILS](#)
- NEMA MOUNTING FLANGE OPTION AVAILABLE – [FOLLOW THIS LINK FOR DETAILS](#)